

Radio Detection Device

R-Eye-300A/C/E



R-Eye

R-Shield

R-Warder

R-Glow

The product based on advanced cognitive radio technology, employs passive detection methods for the remote discovery of unmanned aerial vehicles. It can also accurately identify pre-set black-and-white lists.

We offer three product variants with detection ranges of 3km (R-Eye-300A), 5km (R-Eye-300C) and 9km (R-Eye-300E) to accommodate your personalized detection needs.

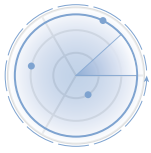


『 KEY BENEFITS 』

- ▶ Passive Detection
- ▶ Black & White List Support
- ▶ Advance Warning
- ▶ High Scalability

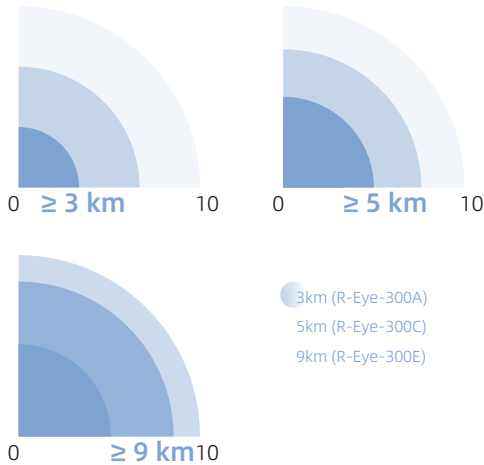
『 TECHNICAL SPECIFICATIONS 』

Coverage Area



360° Surround View

Operating Range



CUSTOMIZABLE

Supported Frequency Bands	2.4GHz, 5.8GHz
Detection Sensitivity	Better than -95dBm (25kHz)
Black-White List	Supported
Power Consumption	30 W
Operating Temperature	-20°C to 65°C
Weight	≤ 10 kg
Product Dimensions	320 mm × 340 mm × 150 mm (L × W × H)
Ingress Protection Rating	IP65

『 INDUSTRY APPLICATIONS 』

- Security & Counter-terrorism in the Oil & Petrochemical Industry
- Security & Counter-terrorism in the Power Industry
- Government & Security Agency
- Civil Aviation Airport & Logistics Base
- Large-Scale Event & Sport Competition
- Urban No-Fly Zone Airspace Security
- Business & Personal Privacy Protection
- More Industry Solutions



MORE
...



Hangzhou Ragine Electronic Technology Development Co., Ltd.

Web: en.hzragine.com

Tel: +86 571 8895 7963

Email: marketing@hzragine.com

* The data in the product specifications on this page may be subject to change. Please contact your dedicated account manager for the latest product details.

